

DiALTA Di650 DIGITAL PRINTER/COPIER/SCANNER

Minolta's Di620 set a new standard for high-volume digital productivity — and our feature-enhanced DiALTA Di650 raises the bar again. Copy quality is sharper. Laser imaging is more precise. Output performance is faster and more flexible, with 65-ppm speed, standard auto document feeder, stackless duplexing, and the ability to copy 11" x 17" full-bleed originals on 12" x 18" paper. More powerful options can enhance your workflow, including networkable printing, scanning and document finishing with user-friendly Fiery control. And rugged design helps you maximize uptime and keep pace with increasing document traffic.

MINOLTA

The essentials of imaging



MINOLTA DIGITAL DOCUMENT DELIVERY SYSTEM

TYPE: DIGITAL PRINTER/COPIER/SCANNER

IMAGING: INTEGRATED DUAL LASER BEAM IMAGING

IMAGE RESOLUTION: 600 x 600 dpi

PRINT SPEED: 65 ppm

PAPER SIZE: UP TO 12" x 18"

FIRST COPY: 3.1 SECONDS

PAPER CAPACITY: 2,600 SHEETS (STANDARD) 6,600 SHEETS (MAX)

MEMORY: 64MB (STANDARD) 320MB (MAX)

FINISHING: Sort, Group, Staple, Hole-Punch, Fold, Post Insertion

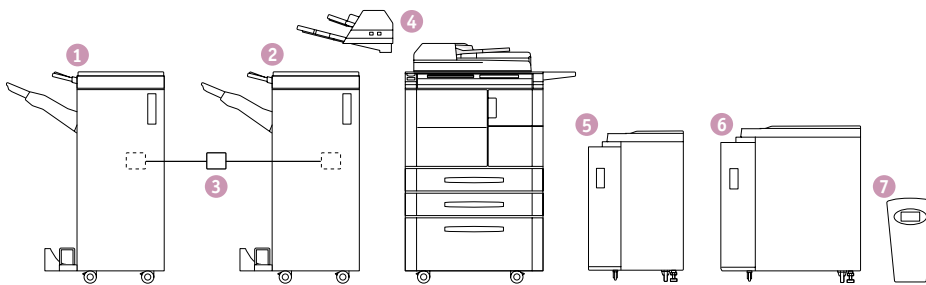
Di
650

PRINT | COPY | SCAN

DiALTA

- ▶ **HIGH SPEED, HIGH RESOLUTION**
UP TO 65 PPM, WHETHER COPYING OR PRINTING, AT TRUE 600 BY 600 DPI.
- ▶ **EXCEPTIONAL IMAGE QUALITY**
REVOLUTIONARY NEW "POLYMERIZED TONER" TECHNOLOGY IMPROVES LINE SHARPNESS AND SMOOTHES HALFTONES. AUTO IMAGE MODE AUTOMATICALLY OPTIMIZES IMAGE QUALITY FOR COMBINED TEXT AND PHOTO REPRODUCTION.
- ▶ **FLEXIBLE, HIGH CAPACITY THROUGHPUT** UP TO 6,600 SHEET PAPER CAPACITY, PAPER SIZES UP TO 12" X 18" FOR "FULL BLEED" 11" X 17" COPYING AND PRINTING, UNIVERSAL PAPER CASSETTES AND AUTOMATIC TRAY SWITCHING ENABLE LONG, UNATTENDED COPY/PRINT RUNS. STACKLESS DUPLEXING IMPROVES OUTPUT SPEED AND RELIABILITY.
- ▶ **POWERFUL NETWORK CONNECTIVITY**
OPTIONAL PRINT CONTROLLER ENABLES USER-FRIENDLY NETWORK PRINTING AND TWAIN-COMPLIANT SCANNING.
- ▶ **POWERFUL FINISHING OPTIONS**
MULTIPLE STAPLING POSITIONS, SADDLE STITCHING, 3-HOLE PUNCH, COVER INSERTION, Z-FOLD ...EVEN AUTOMATIC TRI-FOLD FOR FLYERS AND DIRECT MAIL APPLICATIONS.
- ▶ **SIMPLE TOUCH-SCREEN OPERATION**
USER-FRIENDLY GUI PROVIDES MORE FUNCTIONALITY AND CUSTOMIZATION WITH FEWER MENU LAYERS.





DiALTA Di650 SPECIFICATIONS

TYPE:

Console Digital Printer/Copier/Scanner

IMAGING SYSTEM:

Integrated Dual Laser Beam Imaging

DEVELOPMENT SYSTEM:

Dry Dual Component with new polymerized toner

PRINT/COPY SPEED:

65 ppm (letter) 8-1/2" x 11" portrait

IMAGE RESOLUTION:

True 600 x 600 dpi

MEMORY:

Standard: 64MB (330 pages*)
Maximum: 320MB (1,650 pages*)

WARM-UP TIME:

Less than 6 minutes

FIRST COPY:

3.1 seconds

COPY QUANTITY:

1 - 9,999 copies
(countdown, interrupt capability)

MAGNIFICATION:

Zoom range: 25 - 400%, 1% increments
Preset reduction: 50%, 65%, 77%, 93%
Preset enlargement: 121%, 129%, 155%, 200%

EXPOSURE MODES:

Manual
Auto (Text/Photo)
Text
Photo
Increased Contrast

HALFTONE REPRODUCTION:

256 gradations

PAPER SUPPLY:

500-sheet universal paper drawers (2)
1,500-sheet universal paper drawer (1)
100-sheet manual bypass
4,000 large capacity paper cabinet (option)

MAXIMUM PAPER CAPACITY:

6,600 sheets

POWER REQUIREMENTS:

120V, 60Hz

POWER CONSUMPTION:

2.3 kW (max.)

DIMENSIONS (WXDXH):

25-1/2" x 31" x 45" (650 x 790 x 1,140mm)

WEIGHT:

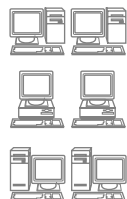
445 lbs. 4 oz. (202kg)

OPTIONS:

- 1 Basic Finisher (sort, staple)
 - 2 Advanced Finisher (sort, group, staple, fold, post-insertion)
 - 3 Hole Punch Kit
 - 4 Cover Inserter
 - 5 Large Capacity Paper Cabinet (8-1/2" x 11" portrait)
 - 6 Universal Large Capacity Paper Cabinet (up to 12" x 18")
 - 7 Pi6500 Print Controller
- ▶ Hard Disk Drive Kit
 - ▶ 64MB Memory Upgrade (M64-1)
 - ▶ 128MB Memory Upgrade (M128-1)
 - ▶ 256MB Memory Upgrade (M256-1)
 - ▶ PageScope, PageScope Light

AVAILABLE FUNCTIONS**:

- Auto Document Feeding
- Auto Duplex (Stackless)
- Auto Low Power
- Auto/Manual/Photo Exposure
- Auto Shut-Off
- Auto Tray Switching
- Book Copy
- Booklet Pagination
- Border Erase
- Cover Insertion
- Electronic Copy Monitor (1,000 accounts)
- Energy Save Mode
- Face-Up or Face-Down Output
- Grouping
- Hole-Punching
- Image Rotation
- Image Shift
- Increased Contrast Mode
- Intelligent Job Building
- Interrupt (Pause)
- Job Memory
- Job Recall
- Job Reserve (Queue) (30 Jobs)
- Negative Image Capability
- Post-Insertion
- Scanning
- Sorting
- Stamping (Continuous)
- Stapling
- Storyboarding (2-in-1)
- Tandem Copy Capability
- Weekly Timer
- Zoom



ISO9001 | ISO9002 | ISO14001
CERTIFICATION



**MINOLTA COPIERS RECOGNIZED AS
MOST RELIABLE BY END USERS 1999 AND 2000**



ALWAYS USE MINOLTA GENUINE SUPPLIES

* Industry standard 6% coverage.

** Some functions may require options.

Design & specifications are subject
to change without notice.

© 2001 Minolta Corporation. All rights reserved.
Reproduction in whole or in part without written
permission is prohibited. Minolta, DiALTA, PageScope,
and The essentials of imaging are trademarks of Minolta.
Fiery is a trademark of Electronics For Imaging, Inc.
All other brands and product names are registered
trademarks or trademarks of their respective owners.

Minolta Corporation • Office Systems Division
101 Williams Drive • Ramsey, NJ 07446
www.minoltausa.com

The essentials of imaging

MINOLTA